



SARAH CROWN

Nexus, Echoes, and Connections

**Stefano Caimi,
Rachel Frank,
Gayoung Jun,
Kirstin Lamb**

May 17 - June 29, 2024

SARAHCROWN presents "Nexus, Echoes, and Connections": A multi-dimensional exhibition that promises to challenge perceptions, evoke emotions, and spark conversations about the symbiotic relationship between humanity and the environment.

In a world where connections weave the fabric of existence, where echoes reverberate through time and space, and where the nexus of humanity and nature intertwines, four distinct artists come together to explore these themes in a groundbreaking exhibition titled "Nexus, Echoes, and Connections." Stefano Caimi, Rachel Frank, Gayoung Jun, and Kirstin Lamb present their thought-provoking works that delve into the intricate relationships between humanity and the environment.



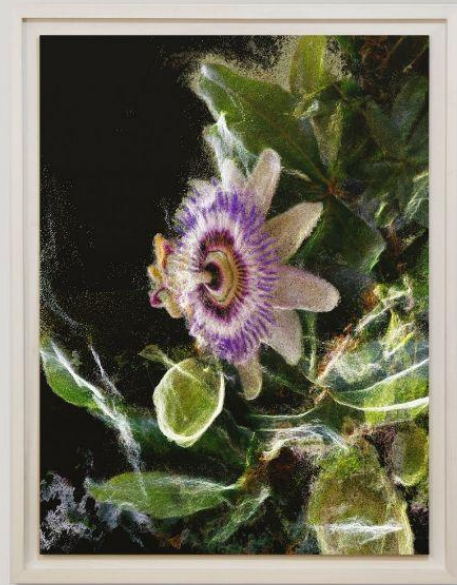
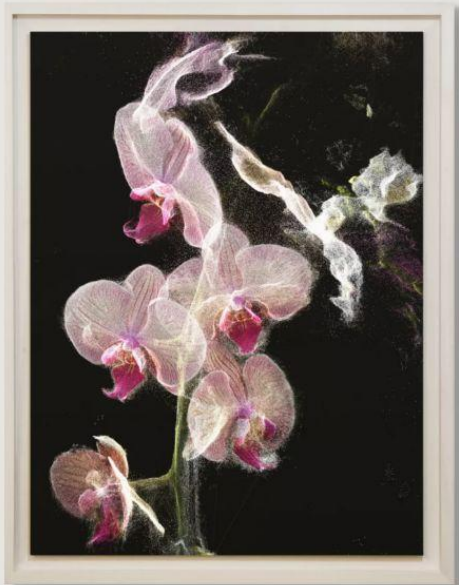
Stefano Caimi, *Phytosynthesis: Passiflora
Caerulea*, 2022, Custom software, inkjet fine
art print on cotton paper, bleached Toulipier
wooden frame, museum glass,
43.25 x 33.5 x 2 in.
\$ 6,000

STEFANO CAIMI

Stefano Caimi's (b. 1991, Italian) artistry delves deep into the natural landscape, unraveling the complex web of ecological relationships and processes that sustain it. Through a custom made software, an algorithm processes the photogrammetric scan of plants and flowers, and a three-dimensional visualization of the scanned data is generated. The intent is to transcend the photographic image through superimpositions and transparencies of millions of data points that allow us to perceive three-dimensionality from a single vantage point. Photography is the generating and terminal element of the work, in a cyclical process of co-participation of man and machine. His artworks serve as fragments of an era where the human-environment relationship takes center stage, inviting viewers to contemplate the fundamental role of natural processes within our ecosystem.

Stefano Caimi, *Phytosynthesis: Phalaenopsis*,
2022, Custom software, inkjet fine art print on
cotton paper, bleached Toulipier wooden frame,
museum glass, 43.25 x 33.5 x 2 in.
\$ 6,000







Rachel Frank, *Chrysalid Interchange: Hand and Pitcher Plant (Tropical Nepenthe)*, 2024, Stoneware ceramics with glazes, fabric, and thread, 21 x 12 x 4.5 in.
\$ 4,000

RACHEL FRANK

Rachel Frank's (b. 1980, American) practice transcends traditional boundaries, blending ceramics, fabric, glass, bronze and zip ties to explore humanity's evolving relationship with our damaged environment. Her brand new ceramics works are an intricate play made of static and dynamic elements, some of them bronze or glass casts held together by hand sewn fabric strings and neon zip ties. By delving into the liminality of nature – the threshold between air and land, ocean and shoreline – Frank advocates for the radical restoration of species and landscapes, emphasizing both the resiliency and fragility of ecosystems.



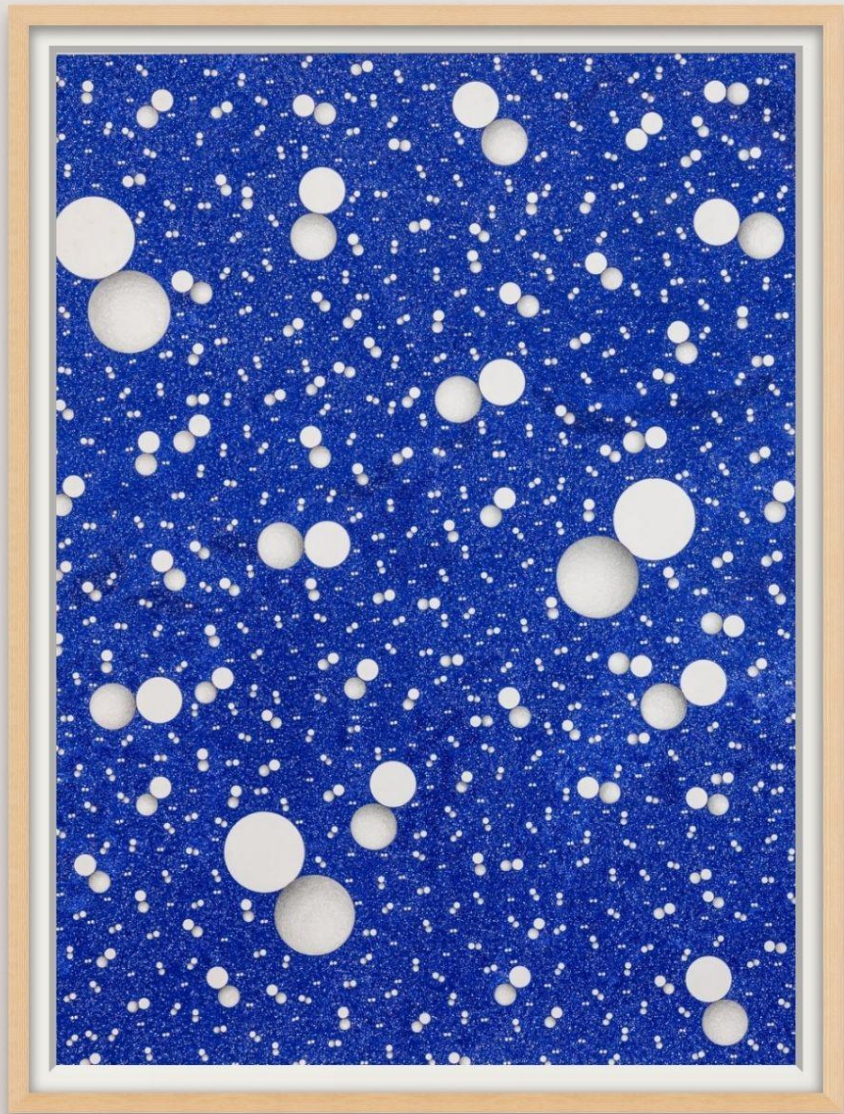
Rachel Frank, *Interstitial Landscape: Chrysalids (Mushrooms and Milkcrate)*, 2023, Stoneware and paper clay ceramic, glazes, fabric, and plexiglass, 13 x 23 x 32 in. \$6,000



Rachel Frank, *Chrysalid Interchange: Hand and Fractured Snake*, 2024, Stoneware ceramic with glazes, hand-cast glass and found glass, 10 x 12.5 x 3 in.
\$6,000



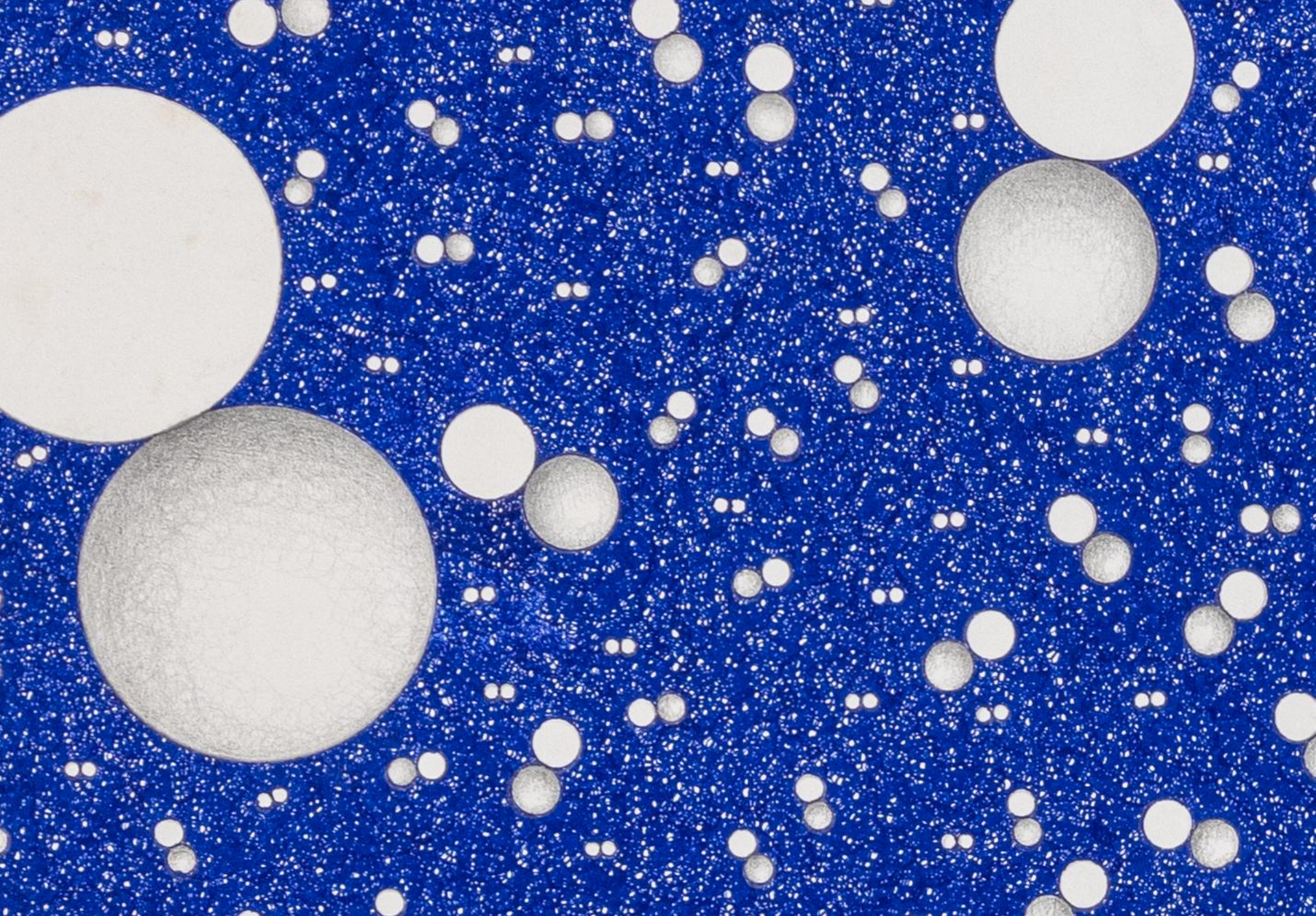
Rachel Frank, *Chrysalid Protectant: Wading Egret, Mangrove, and Oyster*, 2024, Stoneware ceramic with glazes, bronze cast foot and beak, fabric, thread, and zip-ties, 31 x 12 x 3.5 in
\$ 7,000



Gayoung Jun, *Dream Drawing (diptych)*, 2022, Pen on paper, 30.3 x 22 in. \$3,000 each

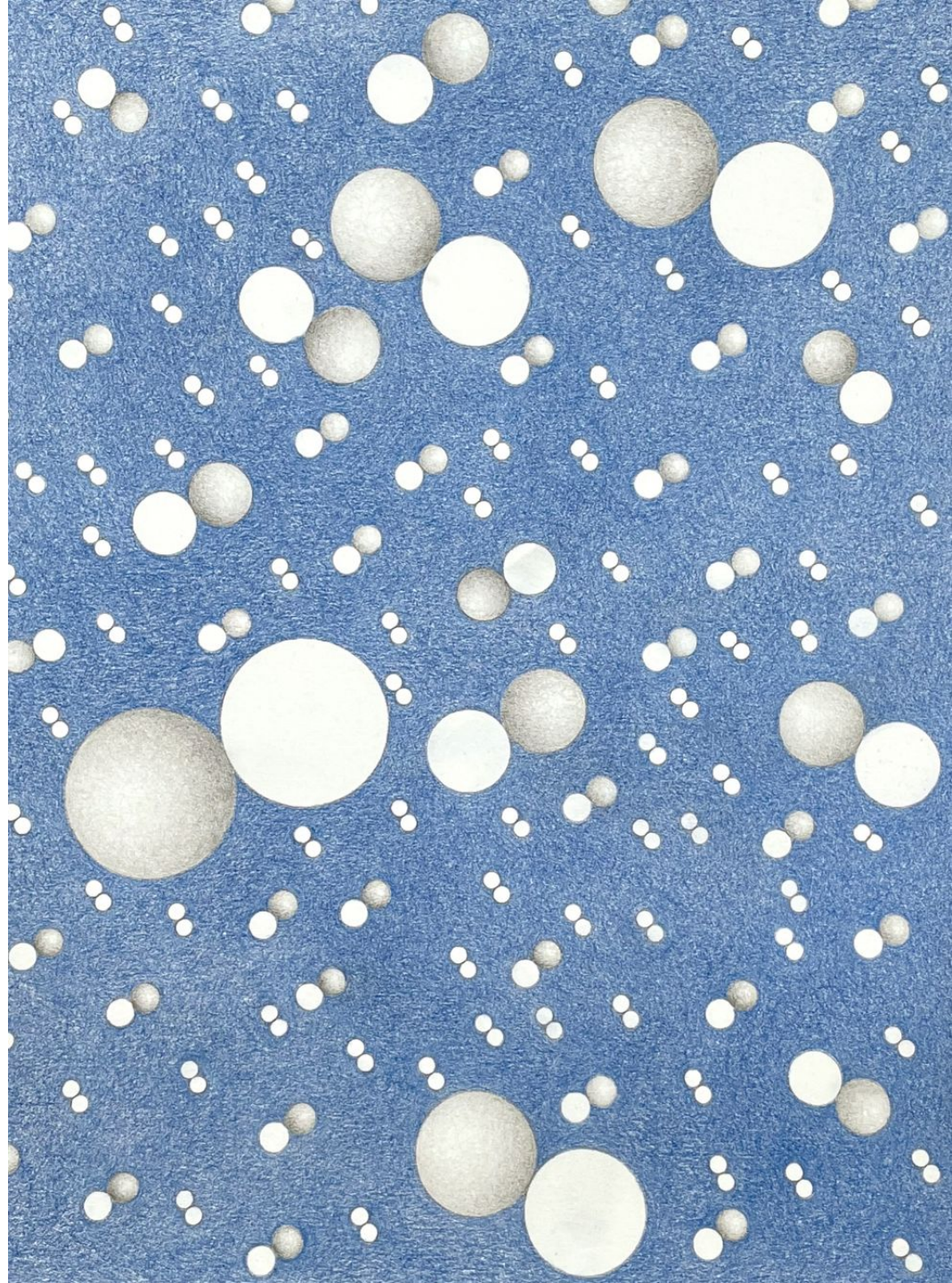
GAYOUNG JUN

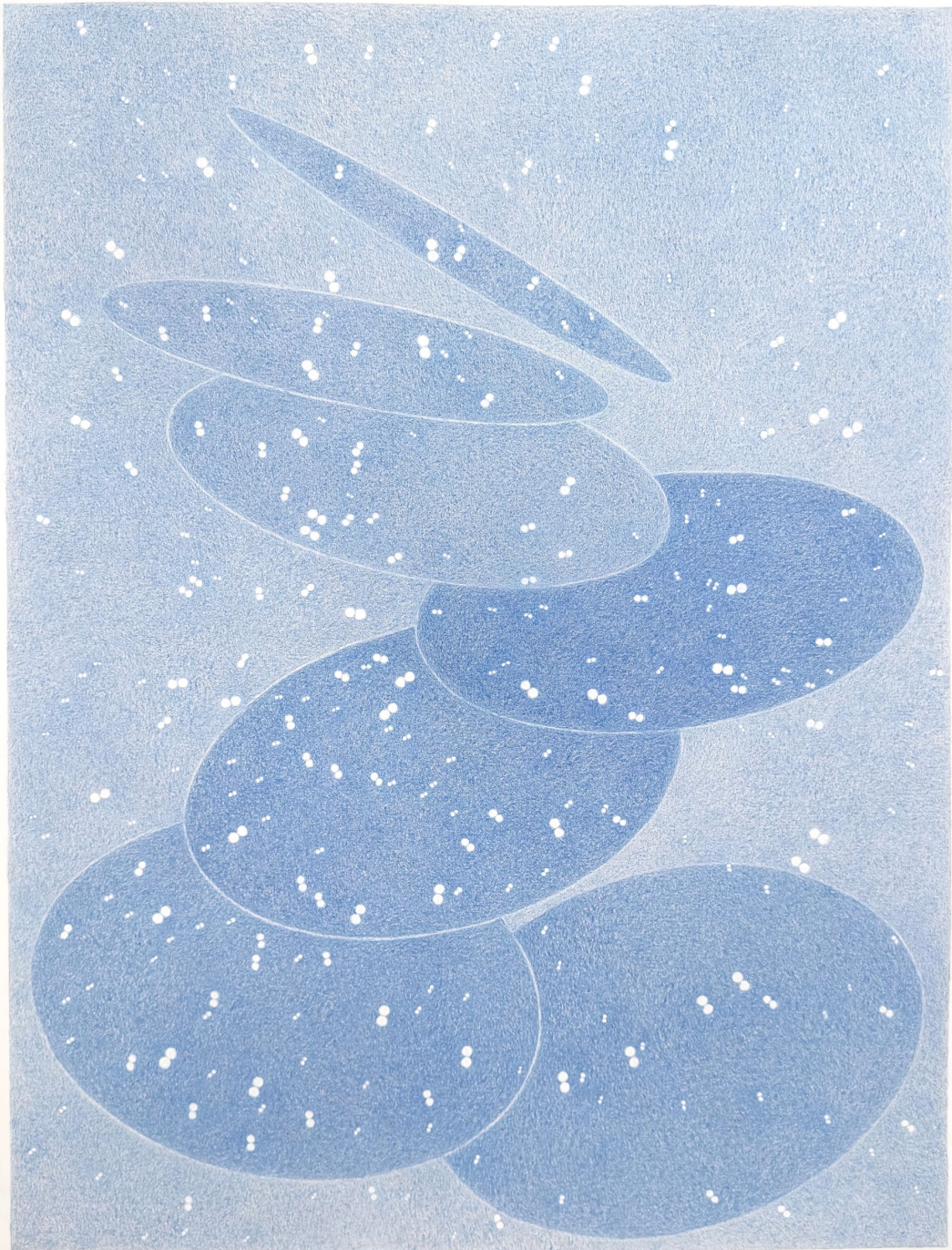
Gayoung Jun's (b. 1978, Korean) artistry is rooted in the exploration of order within the world, seeking to visually translate the inherent order found in objects. Her recent work delves into the concept of time within dreams, unraveling the multi-layered and multifaceted structure of dreamscapes. Through her meticulous process of disassembling and reassembling these structures, Jun creates artworks that encapsulate the fluidity and unpredictability of time and space.



Gayoung Jun, Detail Shot

Gayoung Jun, Dream Drawing, 2021, Pencil,
color pencil on paper, 16.5 x 11.8 in.
\$2,200





06.22.2023 Gayoung Jun 88

Gayoung Jun, Dream Drawing, 2023, Color pencil
on paper, 25.5 x 19.7 in.
\$2,550



Gayoung Jun, Installation Shot



Kirstin Lamb, *Stone Wall in Rhode Island Woods*, 2024,
Acrylic and acrylic gouache on duralar, 24 x 18 in.
\$4,500

KIRSTIN LAMB

Kirstin Lamb's (b. 1979, American) paintings bridge the gap between the digital and the natural world, as she translates digital patterns sourced from photographs onto Duralar (a wet media acetate). Her paintings blur the lines between Photorealism, digital pixelation, and abstract expressionism, capturing the essence of the natural world in its current state. Through her devotion to color and detail, Lamb creates artworks that serve as homage to the complexity and slow growth of the forest, inviting viewers to contemplate their connection to the environment.



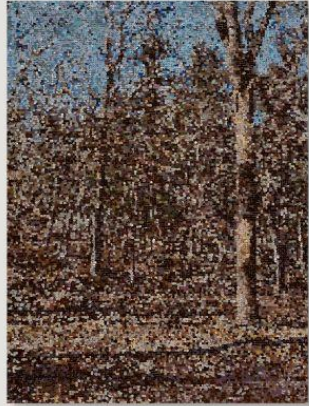
Kirstin Lamb, Detail Shot

Kirstin Lamb, *Lincoln Woods Late Fall Cast Shadows*, 2024,
Acrylic and acrylic gouache on duralar, 30 x 22 in.
\$4,500





Kirstin Lamb, *Providence Woods Walk*, 2024, Acrylic and acrylic gouache on duralar, 8.5 x 8.5 in.
\$950



Kirstin Lamb, Installation Shot

"Nexus, Echoes, and Connections" promises to challenge perceptions, evoke emotions, and spark conversations about the symbiotic relationship between humanity and the environment. Through the diverse perspectives and artistic expressions of Stefano Caimi, Rachel Frank, Gayoung Jun, and Kirstin Lamb, this exhibition invites audiences to contemplate the interconnectedness of all living beings and the ecosystems they inhabit.

For more information, please contact us at info@sarahcrown.com or come and visit us. Our address is [373 Broadway, B15, New York NY 10013](#). Instagram: [sarahcrown_ny](#)

We are proud members of:

